

# CASINO NEWS

Building our future together

## SPRING 2023

- 01 **Casino Mine Project**  
Casino's Economic Impact  
Sustainable Mining Camps
- 02 **Team Building**  
Project Timeline  
Sustainable Mining Camps *con't*
- 03 **Message from the President**  
The Green Economy  
Consultation and Engagement
- 04 **Assesment and Permitting**  
Mine Life in Years  
Casino Cares

## ABOUT THE PROPOSED CASINO MINE PROJECT

Casino Mining Corporation (Casino) is currently advancing its proposed Casino Project; a copper, gold, molybdenum and silver deposit located approximately 300km northwest of Whitehorse.

Casino ranks among the largest copper-gold deposits in the world and can significantly and responsibly contribute to the global demand for critical minerals and the transition to a green economy.

Currently preparing to re-enter the Yukon's environmental assessment process, Casino is seeking permission to construct, operate, close and reclaim the proposed mine using today's environmental, social and governance (ESG) best practices.



## CASINO'S ECONOMIC IMPACT

**"The Casino Project is one of the most significant critical minerals projects in Canada and in addition to providing much-needed minerals to assist the energy transition, can provide great economic and social benefit to the Yukon and to the country."**

Paul West-Sells  
President & CEO  
Casino Mining Corp.

In early February, Casino was pleased to announce the results of an updated study on the potential economic impact of the Project on communities, First Nations, the Yukon and Canada during the Project's life cycle.

The study, completed by MNP LP, incorporates the results from the Casino Feasibility Study (Technical Report) dated August 8, 2022 and highlights Casino's impressive cumulative effect.

Over the life of the proposed Casino Project, it is estimated that Casino will contribute \$44.3 billion to Canada's Gross Domestic Product (GDP) and generate \$12.8 billion in wages and salaries. During each of its 27 years of operation, the Project is expected to contribute \$1.3 billion to the Yukon's economy and \$1.5 billion to Canada's GDP annually. It will also generate \$11.2 billion in taxes and royalties for governments, including Yukon First Nations governments, during the life of the proposed mine.

To read the Casino Project Economic Impact report, please visit [casinomining.com](http://casinomining.com)

## SUSTAINABLE MINING CAMPS

**With an increasing focus and priority on Sustainable Mining Camps (SMC), companies – including Casino – are always seeking ways to improve their carbon footprint.**

Innovations which include generating renewable energy on site, reducing fossil fuel consumption and improving a camp's waste management practices among others.

The benefits to making mining camps more sustainable are many including: a reduced environmental impact; an improved overall Environmental, Social

*con't on page 2*



Preparing to feed the anaerobic digester.

**“SDC is working with local talent to innovatively bridge the gap between sustainable mining activities and the protection of our traditional territory”**

Zachary Fulton,  
Selkirk Development Corporation CEO.

**‘Sustainable’ - from page 1**

and Governance (ESG) performance to attract investment; and, stronger community relationships.

In the Yukon, one such innovation is being led by Devon Yacura, an entrepreneur in Ausenco’s Yukon office. It involves researching the feasibility of anaerobic digesters, which convert biowaste such as kitchen waste and cooking oil, into carbon-neutral renewable energy for remote camps.

In 2020, Devon partnered with local start-up business Balance BioGas, to secure grant funding from Yukon University and Yukon Government to build a prototype digester in his shed-turned laboratory.

*“We wanted to get some hands-on experience building and managing digesters at a small scale to really test and understand the technology to match the needs of our remote mine site clients,”* says Devon. In June 2022, Ausenco reached out to Selkirk Development Corporation (SDC) to begin assessing the feasibility of a digester at Casino. With SDC’s support, the Project Team, consisting of Ausenco, Balance BioGas and Azura Associates, are developing an SMC concept design for the Casino Project, which also includes wind and solar energy prefeasibility work.

The advantage for SDC is that regardless of Casino’s decision to use this technology, Selkirk First Nation and SDC will have a leg up in the marketplace to implement anaerobic digestion at other remote sites throughout their traditional territory.

Research projects like the one being supported by SDC and Casino will help solidify the business case and value proposition of these green technologies. The next stage of the research is a cost-benefit analysis, which will help the Casino team make an informed decision on whether or not to proceed with the innovation.

## BUILDING THE TEAM

The proposed Casino Project is being advanced by an experienced management team led by company President and CEO Paul West-Sells and the Yukon’s Casino team also continues to flourish.

Shena Shaw, VP of Environmental and Community Affairs, leads the Whitehorse office which includes **Environmental Coordinator Melanie Dallow**.

As the environmental coordinator, Melanie supports the environmental assessment activities and oversees all environmental field programs that occur on site. Melanie is actively involved with the ongoing work at the Casino site by ensuring all sampling programs are coordinated and executed, helping manage consultants while they are on site and physically assisting in sampling programs.

Dallow has worked in the environmental field her entire career and studied geology when pursuing her degree. *“I was excited to be able to bring those two worlds together in my work for Casino,”* says Melanie. *“I was drawn to the Casino Project as the Company is committed to learning about and adopting the very best available technologies in the mining industry and to its place in the transition to the green economy.”*

Dallow believes that the Casino Project has the potential to be a world-class mine, which will not only benefit the Yukon’s economy but all Canadians as well.

*“Working for Casino is an amazing opportunity to work on a project from start to finish and set the standard for future mines in the Yukon, Canada and the world,”* continues Melanie. *“I enjoy working collaboratively with the Casino team and learning from so many top professionals in their fields; all with the mind set to do and develop the very best project possible to the benefit of Yukoners.”*



Melanie in the field conducting groundwater sampling and monitoring.



## MESSAGE FROM THE PRESIDENT

On behalf of Casino and the entire team, we were very pleased to announce the results of an updated study on the potential economic impact of the proposed

Casino Project on the Yukon and Canada during the 27-year life of the mine and beyond through closure and reclamation.

The economic opportunities and benefits are significant and can contribute to Yukon individuals, businesses, communities and governments for generations to come.

In addition to the valued critical minerals the Casino Project can contribute to the world's energy transition to electrification and technologies including solar and wind power generation, Casino can provide Yukoners with significant benefits through rewarding career, training and educational opportunities and infrastructure enhancements over the long term.

Importantly, the Casino team can progress the proposed mine in a way that reflects the environmental, social and cultural values of Yukoners.

In January, the Yukon welcomed the Hon. Ranj Pillai as he became the territory's 10th Premier. His government's commitment in developing the North was highlighted in September 2017 with federal and territorial funding to the Yukon Resource Gateway Project to support infrastructure upgrades in areas with high mineral potential in the territory. We are pleased to see further commitment with recent discussions during AME Roundup 2023 between the Hon. John Streicker, the Yukon's Minister of Energy, Mines and Resources, and his BC counterpart to connect the Yukon and BC power grids, which would add much-needed green power to the territory.

In February, we were also very pleased to support the Council of Yukon First Nation's celebrations to commemorate the 50th Anniversary of *Together Today for our Children Tomorrow*.

This important document, delivered by Yukon First Nations Chiefs and leaders to then Prime Minister Pierre Elliott Trudeau on February 14, 1973, set the course for Yukon First Nations land claims and self-government in the territory. The Casino team was proud to support this historic occasion and reflect upon this legacy of Yukon First Nations self-determination.

The Casino team anticipates a busy summer season ahead and wishes you and your families much health and happiness as you enjoy all the Yukon has to offer.

Sincerely,

**Paul West-Sells**  
PRESIDENT & CEO  
CASINO MINING CORP.

## THE GREEN ECONOMY

In order to reduce our demand for fossil fuels, the world needs more critical minerals.

The Casino Mining team aims to empower economic growth and investment along with enhanced social inclusiveness and environmental quality through responsibly sourced copper – a critical mineral in the green economy – from right here at home.



## WHY COPPER?

Did you know that electric vehicles, solar and wind power and batteries for energy storage all require copper? Copper is essential to Canada achieving its net-zero emissions target by 2050.



## FIRST NATION AND COMMUNITY CONSULTATION AND ENGAGEMENT

As Casino prepares to re-enter the Yukon's environmental assessment process this year, decisions made for the proposed Casino Project are guided by the team's ongoing engagement with Yukon governments, communities and individuals taking into consideration their needs and priorities.

The frequency and depth of these discussions varies depending upon the scale and scope of Yukon First Nations' and each parties' interest in learning more about the proposed Casino Project and in providing input.

As Casino works towards submitting its Environmental and Socio-economic Effects (ESE) Statement to YESAB for the Panel Review process, the team's consultation and engagement activities are increasing.

**YESAB's Panel Review is the highest level of environmental assessment in the Yukon.**

For upcoming public and community events, please visit [casinomining.com/news/upcoming-events/](https://casinomining.com/news/upcoming-events/)

**SINCE 2008, CASINO HAS BEEN ENGAGING YUKON FIRST NATIONS GOVERNMENTS AND CITIZENS, YESAB, YUKON AND FEDERAL DEPARTMENTS, RENEWABLE RESOURCES COUNCILS, MUNICIPAL AND VILLAGE LEADERSHIP AND OTHER INTERESTED INDIVIDUALS AND ORGANIZATIONS.**

# CASINO PROJECT: ASSESSMENT AND PERMITTING PHASE

The proposed Casino Project will require multiple permits and approvals from federal, territorial and Yukon First Nations governments and regulatory bodies.

A Quartz Mining License under the *Yukon Quartz Mining Act* will be required from the Yukon Government, which will allow for mining and mining-related activities. A Type A Water Use License under the *Yukon Waters Act* will be needed for mine operations, which authorizes use of water and deposit of waste, as well as considerations for tailings creation and storage.

The Yukon Water Board would issue this license.

From the federal government, a Fisheries Act Authorization under the *Fisheries Act* and a Schedule 2 Amendment of the Metal and Diamond Mining Effluent Regulations will be required to construct the Tailings Management Facility (TMF). Other authorizations and permits will be needed to allow activities such as road construction and camp operations.

Construction can commence when the necessary permitting is complete.

To view a plain language summary of the Casino Project, please visit [casinomining.com](http://casinomining.com)

## CASINO CARES



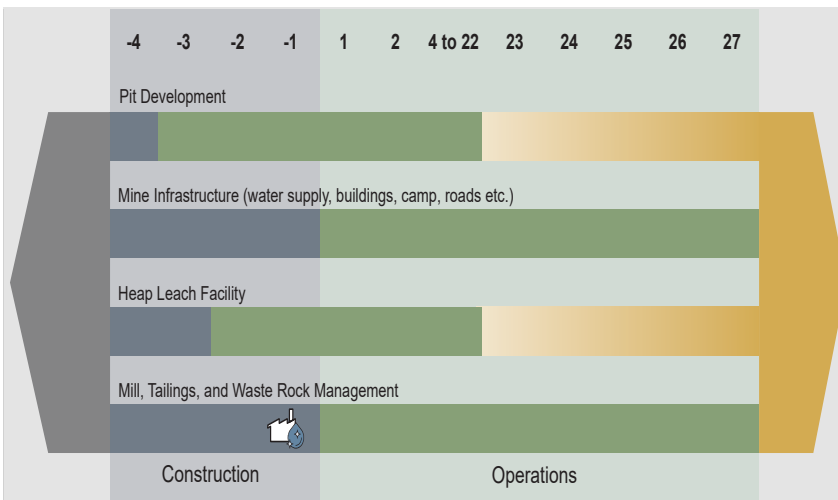
Casino is more than just a mining company when it comes to recognizing and responding to the values of Yukon residents, communities and governments.

The Casino team members are your neighbours; living and working alongside you here in the territory.

*Casino Cares* supports community-based, grassroots opportunities and partnerships in the territory, which can make a positive and lasting difference in the lives of Yukoners today and for generations to follow.

If your organization has a project or initiative you believe would benefit from *Casino Cares*, please reach out to the *Casino Cares* Sponsorship Committee at [info@casinomining.com](mailto:info@casinomining.com) or fill out a sponsorship request form at [casinomining.com/community/casino-cares](http://casinomining.com/community/casino-cares)

## MINE LIFE IN YEARS



Construction Activities

Operations Activities

Reclamation and Closure Activities

Water Treatment Plant Begins Operation

Casino does not indicate an absolute year for the Casino Project timeline as it is challenging to predict when permits will be issued. Year 1 indicates the first year the proposed mine is in operation.

# CASiNO

Building our future together

Please contact us for more info about the Casino Project:

**Paul West-Sells**

President and CEO

**Ken Engquist**

Chief Operating Officer

**Shena Shaw**

VP, Environmental & Community Affairs

**Chandni Kher**

Director, Environmental & Regulatory Affairs

**Melanie Dallow**

Environmental Coordinator

**George Morgan**

Community Relations Manager

**Davina McLeod**

Community Relations Manager & Office Manager

**Amanda Leslie** Yukon Media Relations

867.668.5704

[info@casinomining.com](mailto:info@casinomining.com)

[casinomining.com](http://casinomining.com)



**Casino Mining Corporation**

**301-303 Strickland Street**

**Whitehorse, Yukon Y1A 2J9**

Casino Mining Corporation is a wholly owned subsidiary of Western Copper and Gold Corporation.