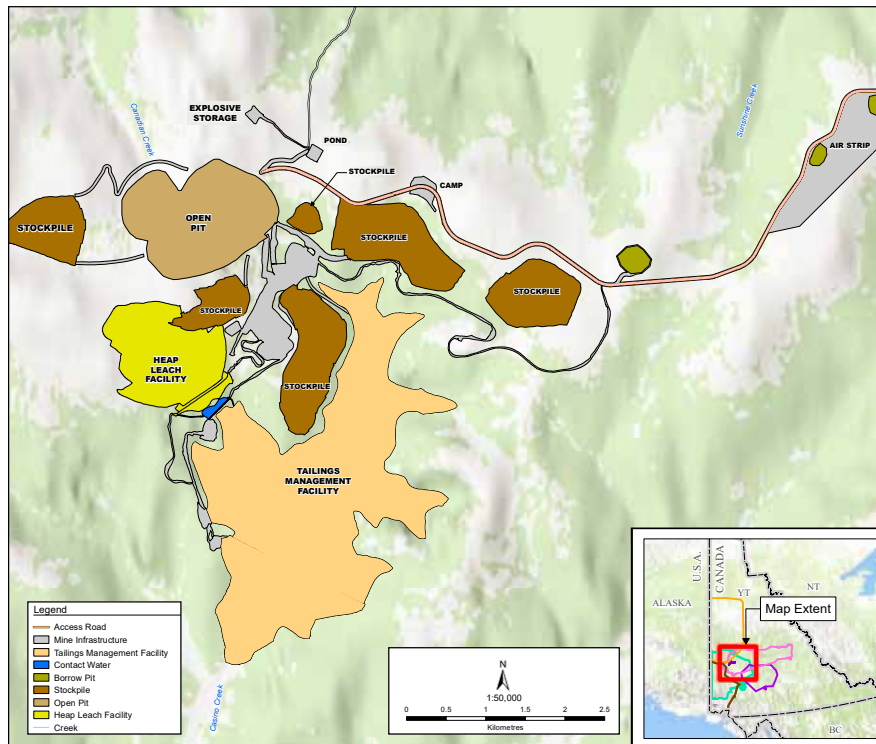


## Project Context and History

Originally discovered in the early 1900's, the proposed Casino Project is a copper, gold, molybdenum and silver deposit approximately 300 km northwest of Whitehorse. The Project has envisioned a conventional open pit mine to tap into these deposits.

The Project has been conducting comprehensive environmental, socio-economic, and engineering studies since 2008. In August of 2022, Casino released its most recent Feasibility Study.

## Site Layout



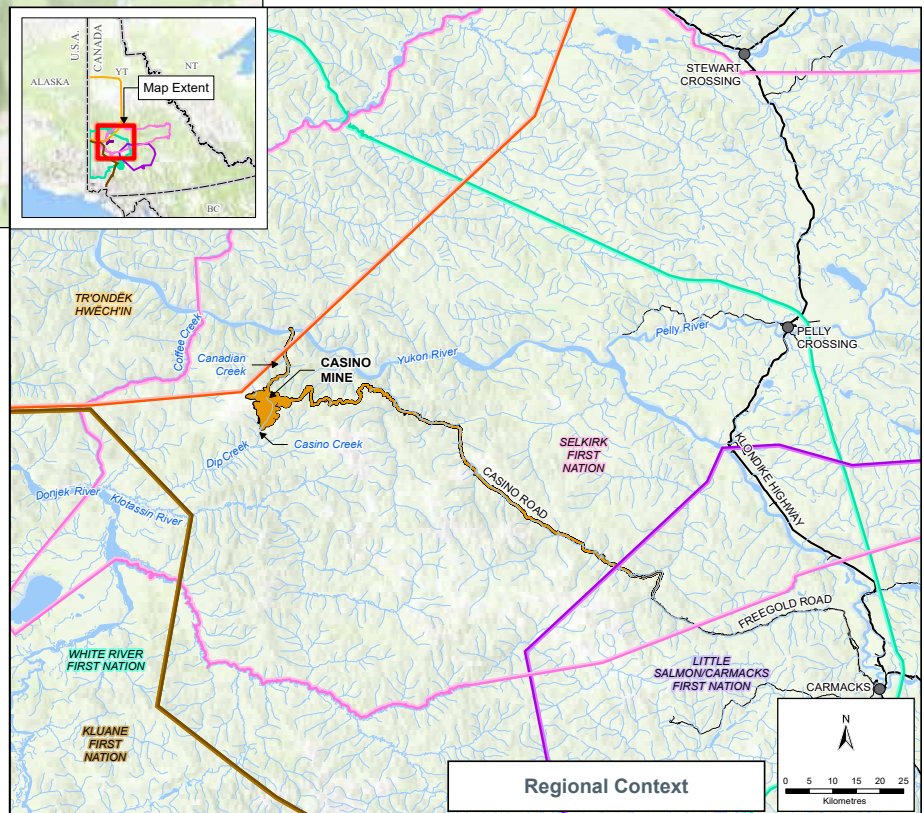
This shows the mine infrastructure near year 27 - at the end of the mine's life

## Affected First Nations

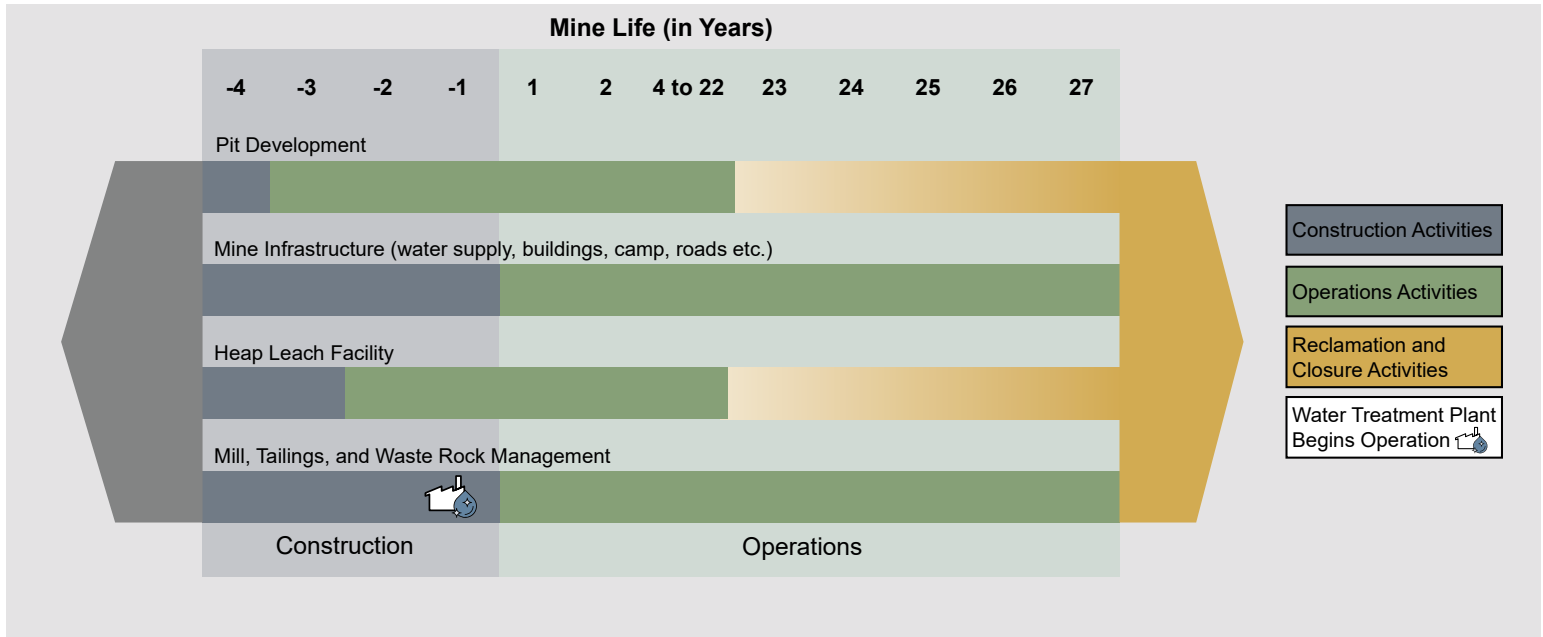
The mine site and a portion of the access road are located within the traditional territory of Selkirk First Nation. A portion of the access road is located within the traditional territory of Little Salmon/Carmacks First Nation, and Casino's water supply pipeline is located within the traditional territory of Tr'ondëk Hwëch'in. Kluane First Nation's traditional territory is located downstream of the proposed mine and the Project is within the asserted traditional territory of the White River First Nation.

## Main Highlights

- Commercial life of 27 years, following a construction and pre-production period
- \$3.62 billion capital investment
- Expected to process ore at 120,000 tonnes per day (tpd) through the mill and 25,000 tpd at the heap leach facility
- Anticipated life-of-mine metal production:
  - Copper – 4.27 billion pounds
  - Gold – 6.95 million ounces
  - Silver – 36.09 million ounces
  - Molybdenum – 346 million pounds
- Peak construction phase of approximately 1400 employees and operation phase of approximately 600-700 employees
- Staff access via fly-in-fly-out using site airstrip
- Ore and supplies transported via Fregold Road and Casino Road
- Project uses 130 MW and is initially powered by liquified natural gas
- Exploring renewable energy and energy consumption reduction initiatives to work towards the goal of net zero



## Project Schedule



## Next Steps

Casino intends to submit an Environmental and Socio-economic Effects Statement to the Yukon Environmental and Socio-Economic Assessment Board (YESAB) soon. YESAB will then assess the Project through a Panel Review process, which is the highest level of environmental assessment in the Yukon, and provide recommendations to decision bodies.

The Project also requires licensing and permitting from the Yukon Government for a Quartz Mining License and from the Yukon Water Board for a Water Use License, among other First Nations, territorial, and federal authorizations prior to construction.



## Your input matters to us!

Please share your feedback about the proposed Casino Project. Scan this QR code for an electronic copy of our comment form!

Thank you for your participation.

For more information, visit the **Casino Mine** website at: [casinomining.com](http://casinomining.com)

